

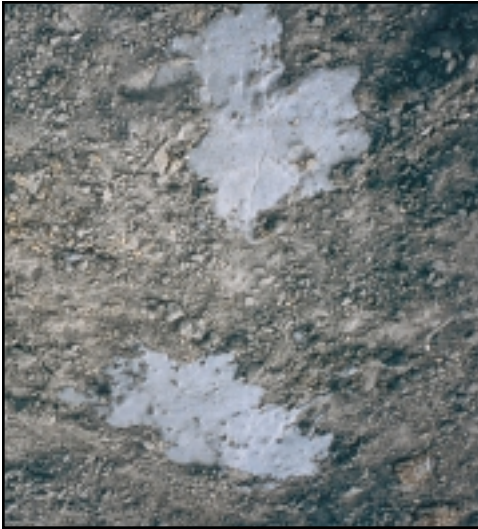
# LAND O' LAKES BEEF FEED DROPPING IDENTIFICATION



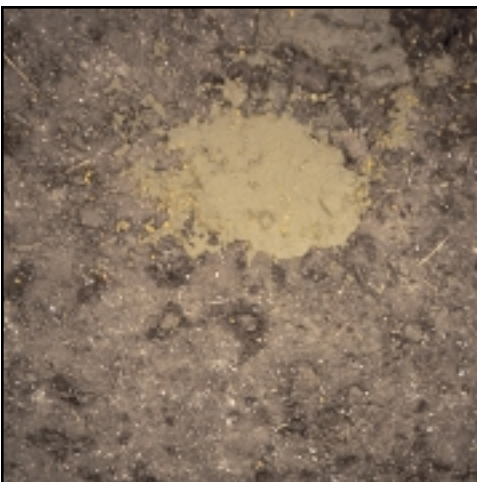
**Ideal Dropping**  
Optimizing Cattle Performance



**Border Line - Subacute Acidosis**  
Re-Evaluate Feeding Levels



**Acute Acidosis**  
Potential Rumen Damage



**Phase 1 - Post Acidosis**  
Monitor Intakes Closely



**Reduced Rate of Passage**  
Monitor to Avoid Overfeeding



**RUMINAL PAPILLAE**

**Healthy Ruminal Papillae**



**Affects of Acidosis on Rumen**

### Costs Of Acidosis

Cattle Incoming Weight \_\_\_\_\_(A)  
 Cattle Finished Weight \_\_\_\_\_(B)  
 Cattle Weight Gain (B - A) \_\_\_\_\_(C)  
 Current Yardage Cost/Hd/Day \_\_\_\_\_(D)  
 Current Ration Cost (Per Ton) \_\_\_\_\_(E)  
 Current Ration Dry Matter \_\_\_\_\_(F)  
 Dry Matter Ration Cost (E / F \* 100) \_\_\_\_\_(G)  
 Current Intake (Dry Matter) \_\_\_\_\_(H)  
 Expected Intake (Dry Matter) \_\_\_\_\_(I)  
 Intake Difference (I - H) \_\_\_\_\_(J)  
 Current Average Daily Gain (ADG) \_\_\_\_\_(K)

**Potential Average Daily Gain Response Due To Achieving Expected Intake**  
*ADG Response to Intake - For every 1# additional Intake, Gain Improves .25#/Hd/Day (L)*

Improved ADG Due To Intake (J \* L) + K \_\_\_\_\_(M)  
 Current Feed Efficiency (H / K) \_\_\_\_\_(N)  
 Expected Feed Efficiency (I / M) \_\_\_\_\_(O)  
 Current Yardage Costs (C / K \* D) \_\_\_\_\_(P)  
 Expected Yardage Costs (C / M \* D) \_\_\_\_\_(Q)  
 Current Feed Costs/Hd (C \* N /2000 \* G) \_\_\_\_\_(R)  
 Expected Feed Costs/Hd (C \* O /2000 \* G) \_\_\_\_\_(S)  
 Value of Improved ADG (P - Q) \_\_\_\_\_(T)  
 Value of Improved F/G (R - S) \_\_\_\_\_(U)

**TOTAL IMPROVEMENT \$/HEAD (T + U) \_\_\_\_\_**

