

PRO-PHOS 6 MINERAL BLOCK w/ ALTOSID®

Type of Feed: Complete mineral **Form of Feed:** Block

General Description:

Fully fortified mineral supplements that prevent development of horn flies in the manure of treated cattle.

LAND O LAKES®
PRO-PHOS 6 MINERAL BLOCK w/ ALTOSID®

FOR BEEF AND DAIRY CATTLE

PREVENTS ADULT HORN FLY EMERGENCE FROM MANURE OF TREATED CATTLE

A nutritional supplement containing S-methoprene* insect growth regulator for continuous feeding to cattle through the horn fly season.

*As the Insect Growth Regulator ALTOSID®.

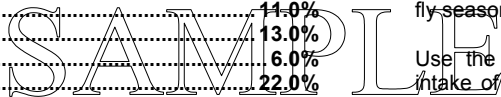
ACTIVE INGREDIENT
 S-Methoprene (CAS #65733-16-6) 0.02%
OTHER INGREDIENTS 99.98%
TOTAL 100.00%

FEEDING AND MANAGEMENT INSTRUCTIONS

When used as directed PRO-PHOS 6 MINERAL BLOCK w/ ALTOSID will provide sufficient S-methoprene insect growth regulator to prevent the emergence of adult horn flies from manure of treated cattle. Existing adult horn flies will not be affected. Start feeding before horn flies appear and continue use until cold weather marks the end of horn fly season.

GUARANTEED ANALYSIS

Calcium (Ca), (Min).....	11.0%
Calcium (Ca), (Max).....	13.0%
Phosphorus (P), (Min).....	6.0%
Salt (NaCl), (Min).....	22.0%
Salt (NaCl), (Max).....	25.0%
Magnesium (Mg), (Min).....	2.0%
Potassium (K), (Min).....	0.1%
Zinc (Zn), ppm, (Min).....	4,375
Manganese (Mn), ppm, (Min).....	2,500
Copper (Cu), ppm, (Min).....	1,300
Iodine (I), ppm, (Min).....	130
Selenium (Se), ppm, (Min).....	22.0
Vitamin A, I.U./lb, (Min).....	150,000
Vitamin D ₃ , I.U./lb, (Min).....	12,000
Vitamin E, I.U./lb, (Min).....	60



Use the following management techniques to maintain continuous intake of PRO-PHOS 6 MINERAL BLOCK w/ ALTOSID at a level of 1/4 to 1/2 lb. per 100 lbs. animal body weight per month.

Assure cattle are not starved for nutrients in PRO-PHOS 6 MINERAL BLOCK w/ ALTOSID by providing them prior to feeding PRO-PHOS 6 MINERAL BLOCK w/ ALTOSID. Offer cattle 50 lbs. of PRO-PHOS 6 MINERAL BLOCK w/ ALTOSID for every fifteen head of cattle. Remove all other self-limiting nutritional supplements.

Locate PRO-PHOS 6 MINERAL BLOCK w/ ALTOSID where cattle congregate (watering, loafing and shade areas). Replenish PRO-PHOS 6 MINERAL BLOCK w/ ALTOSID on a regular basis as needed.

FEED INGREDIENTS

Monocalcium/Dicalcium Phosphate, Salt, Calcium Carbonate, Distillers Dried Grains with Solubles, Yeast Culture, Molasses Products, Magnesium Oxide, Sodium Selenite, Zinc Sulfate, Manganese Sulfate, Iron Oxide, Basic Copper Chloride, Ethylenediamine Dihydriodide, Cobalt Carbonate, Vitamin A Supplement, Vitamin D3 Supplement, Vitamin E Supplement, Mineral Oil, Natural and Artificial Flavor

KEEP OUT OF REACH OF CHILDREN

CAUTION:

PRECAUTIONARY STATEMENTS: HAZARDS TO HUMANS AND DOMESTIC ANIMALS: CAUTION: This product contains high levels of copper. Consumption of this product by sheep or goats could result in copper toxicity.

ENVIRONMENTAL HAZARDS: This product is toxic to aquatic invertebrates. Using is in a manner other than that described by the label could result in harm to aquatic invertebrates. Do not contaminate water when disposing of rinsate or equipment washwaters.

DIRECTIONS FOR USE

It is a violation of Federal Law to use this product in a manner inconsistent with its labeling.

If intake of PRO-PHOS 6 MINERAL BLOCK w/ ALTOSID is below 1/4 lb. per 100 lbs. animal body weight per month, increase the number of feeding locations and/or change location(s) to areas more frequented by cattle. If intake of PRO-PHOS 6 MINERAL BLOCK w/ ALTOSID is above 1/2 lb. per 100 lbs. animal body weight per month, reduce the number of feeding locations and/or change location(s) to areas less frequented by cattle.

Introduction of this product after an adult horn fly infestation is established will require treatment of cattle with adulticides if immediate elimination of the adult fly population is desired.

STORAGE AND DISPOSAL

Do not contaminate water, food or feed by storage or disposal.

STORAGE: Store PRO-PHOS 6 MINERAL BLOCK w/ ALTOSID in a cool place.

PESTICIDE DISPOSAL: Wastes resulting from the use of this product may be disposed of on-site or at an approved waste disposal facility.

CONTAINER DISPOSAL: Completely empty bag into application equipment. Then dispose of empty bag in a sanitary landfill, or by incineration, or if allowed by state and local authorities, by burning. If burned, stay out of smoke.

ALTOSID® Insect Growth Regulator is a registered trademark of Wellmark International.

**FERMENTATION FORTIFIED WITH
 DIAMOND V XP™ YEAST CULTURE**

Available Options:

Product No.	Notes	Mineral Name	Active Drug	Active Drug Level
1990151	Loose	Pro-Phos 6 MAG Mineral w/ Altosid	Methoprene	180 g/ton
1990081	Loose	Pro-Phos 8 w/ Altosid Mineral	Methoprene	180 g/ton
1990134	Block	Pro-Phos 6 Mineral Block w/ Altosid	Methoprene	180 g/ton
1990133	Block	Pro-Phos 8 Mineral Block w/ Altosid	Methoprene	180 g/ton
1990144	Loose	Pro-Phos 6 Mag Altosid Plus Mineral	Methoprene, Aureomycin	120 g/ton 3500 g/ton
1990078	Loose	Pro-Phos 8 Altosid Plus Mineral	Methoprene, Aureomycin	158 g/ton 5600 g/ton
1990090	Loose	Rabon Oral Larvicide (ROL) Mineral	Rabon	9000 g/t
1990093	Block	Rabon Oral Larvicide (ROL) Block	Rabon	4200 g/t

Product Features:**Product Benefits:**

Fly control in pastured cattle

Increase suckling calf and stocker weights from 15 to 50 lbs. over summer grazing.

Altosid insect growth regulator (IGR)

Not an insecticide, but a growth regulator that prevents development of horn flies resistant to organophosphates and pyrethroids.

Lower phosphorus level targeted to forage conditions and cow/stocker requirements

Matches green grass conditions in the spring and also meets low phosphorus demands in late summer and fall

Trace mineral fortification

Prevents disease, provides improved fertility and better pasture performance

Contains distillers dried grains with solubles

Improved palatability and more consistent intake

Diamond V's "XP" Yeast

Improves palatability; aids in trace mineral utilization; improves fiber digestibility

40 lb block

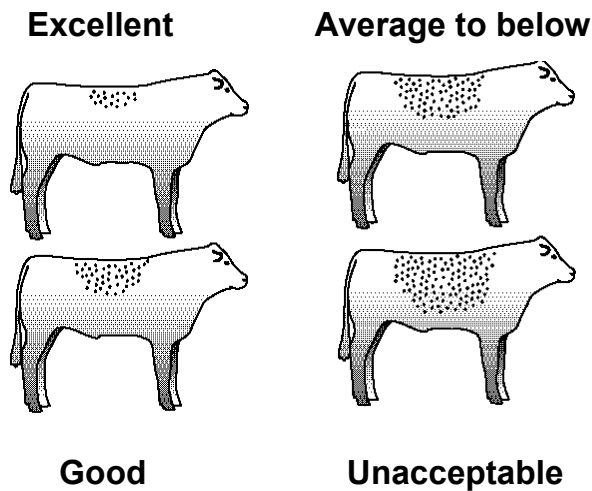
Ease of feeding while reducing labor costs

Usage Tips

Land O Lakes Fly Control Minerals are recommended for all beef and dairy cattle which are receiving rations composed largely of grass hay or for cattle grazing range or grass pastures. Read and follow all label directions. In general, targeted intake is 2-4 oz/head daily.

Feeding of Altosid containing products should begin in the spring before horn flies appear on cattle and continue until cold weather restricts horn fly activity. **If horn flies are present when the program is started, adult fly control measures should be used.** Begin control of this initial horn fly population with one of insecticidal dust, spray or oiler products. Altosid containing products can be used along with other fly control products without restrictions. Additional control measures will be required for 3 to 4 weeks to eliminate adults emerging from untreated manure.

Fly Population Evaluation Guide



Altosid containing mineral products should not be introduced for free-choice feeding if cattle are starved for mineral or salt. First satisfy their salt and mineral appetite, and then remove the salt or mineral products when Altosid feeding is begun. The presence of additional salt or mineral products will generally decrease Altosid consumption.

If free-choice consumption of Altosid products is lower than desired, consider several alternatives for solution. Put out more mineral feeders (one feeder is suggested for each 15 to 20 head), relocate feeders closer to water and loafing areas or increase palatability by mixing with protein type ingredients (soybean meal, cottonseed meal, dry gluten meal, etc.) or dry molasses.

Over-consumption of free-choice products can occur. Reduce the number of feeding stations (but never provide less than one feeder per 15 cows) or move the feeders to less frequented areas to reduce over-consumption. If over-consumption continues, mix additional salt with the supplement to reduce consumption. Consumption of block products are generally less than loose or processed products. When mixing, be sure the cattle continue to receive the recommended amount of Altosid.

For optimum fly control in pasture situations, fly control minerals should be fed to cattle at least 2 weeks prior to the first flies appearing. These products only control the development of fly larvae in treated manure into adult flies. If adult flies are present when the product is first fed, other fly control measures such as dusts, sprays or oilers will be needed to gain control of fly populations. To assure adequate mineral intake, remove all other salt and mineral products. Have an adequate water supply available and place the mineral feeder near the water supply or in the animals' loafing areas. Put out fresh mineral at least once a week. An upright covered mineral feeder is recommended to protect the mineral.

CAUTION: Do not feed to sheep or allow sheep access to this mineral because of the high level of supplemental copper.

Key Points

1. The product must be consumed at least every other day, all season long.
2. Consumption of the product must start before horn fly season starts.
3. Intake should be 0.75 - 1.5 mg per 100 lb body weight daily for Altosid.
4. Adequate feeder space is needed--15 to 20 cattle per 3-sided feeder. Other feeder types may have different stocking rates.
5. Location of the feeder must be adjusted to get good consumption. If consumption is low, move the feeders closer to water or loafing areas. More feeders may be needed. If consumption is too high, move feeders further away from water or loafing areas.
6. A few face flies does not mean the product failed. Altosid will not control face flies.
7. The objective is to control horn flies, not eradicate them. 90% control of horn fly numbers is an excellent job. 75 to 80% control is more realistic for any product.
8. Other fly control measures may be needed if adult horn flies are present when feed-through products are started or if control is lost during the horn fly season. Other fly control measures may be needed if the flies are not horn flies. Most sprays, dusts and ear tags kill adult flies though contact, but may not work instantly. Be aware of horn fly resistance to common insecticides used in the area. Many areas have developed horn flies that are resistant to topical organophosphate and pyrethroid products.
9. Other control measures are required for house, stable and face flies. Altosid will only control horn flies, which lay their eggs exclusively in manure. House, stable and face flies use other breeding sites as well, so only treating the manure by feeding Rabon may not be effective in controlling these flies.
10. Expect greater horn fly numbers in wet seasons than dry. Even a small amount of rain increases fly numbers because the natural death toll is much lower in wet weather compared to dry. Since all fly control measures average 80% effectiveness, a larger number of flies escape control in wet weather compared to dry.
11. Late summer and early fall rains, coupled with warm days and cool nights without freezing, may reduce mineral consumption, resulting in untreated manure. During this late summer/early fall period, insects enter one of their life cycles called diapause, where all of their developmental stages are slowed, resulting in flies with a longer life expectancy. Flies that live longer produce more eggs, contributing to a late season population explosion among the horn flies. Additional fly control measures may be needed for late season horn fly control.