

PRO-PHOS 8 ALTOSID Plus Mineral

Type of Feed: Complete mineral **Form of Feed:** Meal

General Description:

Fully fortified mineral supplements that prevent development of horn flies in the manure of treated cattle.

LAND O LAKES®

PRO-PHOS 8 MINERAL ALTOSID® PLUS

MEDICATED

FOR BEEF CATTLE, GROWING DAIRY HEIFERS AND NON-LACTATING DAIRY CATTLE

For control of active infection of anaplasmosis caused by *Anaplasma marginale* susceptible to chlortetracycline; For prevention of adult horn fly emergence from manure of treated cattle.

ACTIVE DRUG INGREDIENT

Chlortetracycline	5600 g/ton
S-Methoprene* (CAS# 65733-16-6).....	0.0171 %
Other Ingredients	99.98 %
Total	100.00 %

* As the Insect Growth Regulator ALTOSID®

GUARANTEED ANALYSIS

Calcium (Ca), (Min).....	12.5 %
Calcium (Ca), (Max).....	15.0 %
Phosphorus (P), (Min).....	8.0 %
Salt (NaCl), (Min)	16.0 %
Salt (NaCl), (Max).....	18.5 %
Magnesium (Mg), (Min)	2.0 %
Potassium (K), (Min)	0.1 %
Zinc (Zn), ppm, (Min).....	4,375
Manganese (Mn), (Min)	2,500
Copper (Cu), ppm, (Min)	1,300
Iodine (I), ppm, (Min)	130
Selenium (Se), ppm, (Min)	22.0
Vitamin A, I.U./lb, (Min)	150,000
Vitamin D ₃ , I.U./lb, (Min)	12,000
Vitamin E, I.U./lb, (Min)	60

FEED INGREDIENTS

Monocalcium/Dicalcium Phosphate, Salt, Calcium Carbonate, Yeast Culture, Distillers Dried Grains with Solubles, Molasses Products, Magnesium Oxide, Sodium Selenite, Zinc Sulfate, Manganese Sulfate, Iron Oxide, Basic Copper Chloride, Ethylenediamine Dihydriodide, Cobalt Carbonate, Vitamin A Supplement, Vitamin D₃ Supplement, Vitamin E Supplement, Mineral Oil, Natural and Artificial Flavor

KEEP OUT OF REACH OF CHILDREN

CAUTION:

PRECAUTIONARY STATEMENTS: HAZARDS TO HUMANS AND DOMESTIC ANIMALS: CAUTION: This product contains high levels of copper. Consumption of this product by sheep or goats could result in copper toxicity.

ENVIRONMENTAL HAZARDS: This product is toxic to aquatic invertebrates. Using in a manner other than that described by the label could result in harm to aquatic invertebrates. Do not contaminate water when disposing of rinsate or equipment washwaters.

DIRECTIONS FOR USE

It is a violation of federal law to use this product in a manner inconsistent with its labeling.

For control of anaplasmosis and prevention of horn fly emergence from manure of treated cattle: Feed 0.125 lb of PRO-PHOS 8 MIN ALTOSID PLUS to beef cattle, developing dairy heifers weighing up to 700 lbs to provide 350 mg chlortetracycline daily.

Cattle weighing over 700 lbs must be fed 0.5 mg chlortetracycline per pound of bodyweight daily. The following table may be used for cattle of various weights:

Animal Wt lb	Chlortetracycline mg/head/day	PRO-PHOS 8 ALTOSID PLUS lb/head/day
<700	300	0.125
800	400	0.143
1000	500	0.179
1200	600	0.214
1400	700	0.250

Each pound of PRO-PHOS 8 MIN ALTOSID PLUS contains 2,800 mg chlortetracycline and 77.5 mg methoprene. Maximum intake is 4.8 oz (0.3 lb). Do not feed free choice.

STORAGE AND DISPOSAL

Do not contaminate water, food or feed by storage or disposal.

STORAGE: Store PRO-PHOS 8 MINERAL w/ ALTOSID PLUS in a cool place.

PESTICIDE DISPOSAL: Wastes resulting from the use of this product may be disposed of on-site or at an approved waste disposal facility.

CONTAINER DISPOSAL: Completely empty bag into application equipment. Then dispose of empty bag in a sanitary landfill, or by incineration, or if allowed by state and local authorities, by burning. If burned, stay out of smoke.

ALTOSID® Insect Growth Regulator is a registered trademark of Wellmark International.

WARNING

A withdrawal period has not been established for this product in pre-ruminating calves. Do not use in calves to be processed for veal.

**FERMENTATION FORTIFIED WITH
DIAMOND V XP™ YEAST CULTURE**

Available Options:

Product No.	Notes	Mineral Name	Active Drug	Active Drug Level
1990151	Loose	Pro-Phos 6 MAG Mineral w/ Altosid	Methoprene	180 g/ton
1990081	Loose	Pro-Phos 8 w/ Altosid Mineral	Methoprene	180 g/ton
1990134	Block	Pro-Phos 6 Mineral Block w/ Altosid	Methoprene	180 g/ton
1990133	Block	Pro-Phos 8 Mineral Block w/ Altosid	Methoprene	180 g/ton
1990144	Loose	Pro-Phos 6 Mag Altosid Plus Mineral	Methoprene, Aureomycin	120 g/ton 3500 g/ton
1990078	Loose	Pro-Phos 8 Altosid Plus Mineral	Methoprene, Aureomycin	158 g/ton 5600 g/ton
1990090	Loose	Rabon Oral Larvicide (ROL) Mineral	Rabon	9000 g/t
1990093	Block	Rabon Oral Larvicide (ROL) Block	Rabon	4200 g/t

Product Features:

Fly control in pastured cattle

Altosid insect growth regulator (IGR)

Contains 8% Phosphorus which fits well into year-round mineral supplementation in most geographic regions

Provides optimum levels of trace minerals

Aureomycin, 5600 g/ton

Loose Form

Product Benefits:

Increase suckling calf and stocker weights from 15 to 50 lbs. over summer grazing.

Not an insecticide, but a growth regulator that prevents development of horn flies resistant to organophosphates and pyrethroids.

Provides necessary phosphorus, vitamins and other trace minerals for improved growth rate and reproduction

Aids in disease prevention, improves fertility, and promotes fetal development

Control of anaplasmosis infection in growing cattle and cows with no withdrawal prior to slaughter.

Increased consumption compared to block form.

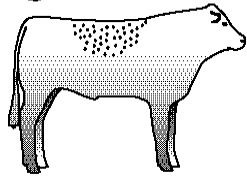
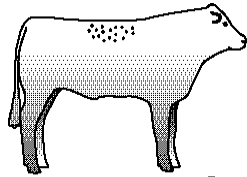
Usage Tips

Land O Lakes Fly Control Minerals are recommended for all beef and dairy cattle which are receiving rations composed largely of grass hay or for cattle grazing range or grass pastures. Read and follow all label directions. In general, targeted intake is 2-4 oz/head daily.

Feeding of Altosid containing products should begin in the spring before horn flies appear on cattle and continue until cold weather restricts horn fly activity. **If horn flies are present when the program is started, adult fly control measures should be used.** Begin control of this initial horn fly population with one of insecticidal dust, spray or oiler products. Altosid containing products can be used along with other fly control products without restrictions. Additional control measures will be required for 3 to 4 weeks to eliminate adults emerging from untreated manure.

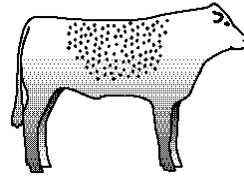
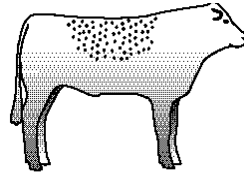
Fly Population Evaluation Guide

Excellent



Good

Average to below



Unacceptable

Altosid containing mineral products should not be introduced for free-choice feeding if cattle are starved for mineral or salt. First satisfy their salt and mineral appetite, and then remove the salt or mineral products when Altosid feeding is begun. The presence of additional salt or mineral products will generally decrease Altosid consumption.

If free-choice consumption of Altosid products is lower than desired, consider several alternatives for solution. Put out more mineral feeders (one feeder is suggested for each 15 to 20 head), relocate feeders closer to water and loafing areas or increase palatability by mixing with protein type ingredients (soybean meal, cottonseed meal, dry gluten meal, etc.) or dry molasses.

Over-consumption of free-choice products can occur. Reduce the number of feeding stations (but never provide less than one feeder per 15 cows) or move the feeders to less frequented areas to reduce over-consumption. If over-consumption continues, mix additional salt with the supplement to reduce consumption. Consumption of block products are generally less than loose or processed products. When mixing, be sure the cattle continue to receive the recommended amount of Altosid.

For optimum fly control in pasture situations, fly control minerals should be fed to cattle at least 2 weeks prior to the first flies appearing. These products only control the development of fly larvae in treated manure into adult flies. If adult flies are present when the product is first fed, other fly control measures such as dusts, sprays or oilers will be needed to gain control of fly populations. To assure adequate mineral intake, remove all other salt and mineral products. Have an adequate water supply available and place the mineral feeder near the water supply or in the animals' loafing areas. Put out fresh mineral at least once a week. An upright covered mineral feeder is recommended to protect the mineral.

CAUTION: Do not feed to sheep or allow sheep access to this mineral because of the high level of supplemental copper.

Key Points

1. The product must be consumed at least every other day, all season long.
2. Consumption of the product must start before horn fly season starts.
3. Intake should be 0.75 - 1.5 mg per 100 lb body weight daily for Altosid.
4. Adequate feeder space is needed--15 to 20 cattle per 3-sided feeder. Other feeder types may have different stocking rates.
5. Location of the feeder must be adjusted to get good consumption. If consumption is low, move the feeders closer to water or loafing areas. More feeders may be needed. If consumption is too high, move feeders further away from water or loafing areas.
6. A few face flies does not mean the product failed. Altosid will not control face flies.
7. The objective is to control horn flies, not eradicate them. 90% control of horn fly numbers is an excellent job. 75 to 80% control is more realistic for any product.
8. Other fly control measures may be needed if adult horn flies are present when feed-through products are started or if control is lost during the horn fly season. Other fly control measures may be needed if the flies are not horn flies. Most sprays, dusts and ear tags kill adult flies though contact, but may not work instantly. Be aware of horn fly resistance to common insecticides used in the area. Many areas have developed horn flies that are resistant to topical organophosphate and pyrethroid products.
9. Other control measures are required for house, stable and face flies. Altosid will only control horn flies, which lay their eggs exclusively in manure. House, stable and face flies use other breeding sites as well, so only treating the manure by feeding Rabon may not be effective in controlling these flies.
10. Expect greater horn fly numbers in wet seasons than dry. Even a small amount of rain increases fly numbers because the natural death toll is much lower in wet weather compared to dry. Since all fly control measures average 80% effectiveness, a larger number of flies escape control in wet weather compared to dry.
11. Late summer and early fall rains, coupled with warm days and cool nights without freezing, may reduce mineral consumption, resulting in untreated manure. During this late summer/early fall period, insects enter one of their life cycles called diapause, where all of their developmental stages are slowed, resulting in flies with a longer life expectancy. Flies that live longer produce more eggs, contributing to a late season population explosion among the horn flies. Additional fly control measures may be needed for late season horn fly control.